

Gallery FACTORY



FACTORY

Gallery FACTORY
127-3, Changsung-dong, Jongro-gu, Seoul, Korea, 110-034
Tel/Fax 82-(0)2-733-4883
www.factory483.org

OVERVIEW



Gallery FACTORY since 2002

FACTORY, an art space and art consulting office, was founded in 2002 as FACTORY Arts & Crafts, and was primarily dedicated to introducing different genres in fine arts and design as well as performing arts and developing original design products conceived by different artists.

In 2005, FACTORY moved its location from Samchung-dong to Hyoja-dong, neighboring the Blue House and Gyeongbok Palace, changed its direction more toward presentation and interpretation of the work of young and upcoming artists in all media and development of audience participation through workshop programs and gallery talks. FACTORY seeks to be a vital cultural resource for the City of Seoul and to serve constituencies beyond Seoul with its educational programs, project-based public art projects, publications and international exchange programs.

Exhibition

FACTORY, an exhibition space & art consulting office, holds an average of ten exhibitions per year through close discussions with its planning committee. FACTORY receives artists' portfolios and exhibition proposals continually throughout the year, and introduces emerging as well as established artists whom are selected through the jury sessions biannually. FACTORY's annual exhibitions consist of categories like FACTORY Emerging Artist Show, International Exchange Program, FACTORY Artist Show and Contemporary Design Show.



EXHIBITION



2003

The Pleasure of Patterns

Artist_ Baruch Gottlieb, Park Hoonkyu, Lee Joongkeun, Dec 21, 2002 - Feb 17, 2003

A Combined View

Artist_ Lee Soyeon, Gerry Chin, Mar 14 - April 20

CPL Shedding Light on Insects

Artist_ Design Group CLP(Jung Yeonchan, Yoon Kyu-Sang), April 23 - May 11

Puppet World

May 16 - June 15

Hangul, Typography, Book

Artist_ Lee Yongje , June 27 - July 24

Guarding on Boundary

Artist_ Yoon Heesu, Aug 25 - Sep 14

Book Arts

Artist_ Kwak Nasil, Kim Sohee, Park Youngsim , Yu Rim, Lee Nankyu,
Lee Myungsun, Jang Yanghee, Jung Heekyoung, Chae Soonsub, Choi Youngjoo,
Hyun Kyungwon, Hong Boram, Sep 19 - Oct 26

Window Exhibition

Artist_ Kim Kira, Nov 25 - Dec 14

2004

A Diary: Typographic Days

Artist_ Park Woohyook , Feb 20 - Mar 21

Introducing

Artist_ Emil Goh, Mar 26 - April 18

Jupiter

Artist_ Marionette Moksung, April 28 - May 23

I Wish You Were Happy

Artist_ Noh Seokmee, June 11 - June 27

House of Melancholia

Artist_ Kim Siyeon, July 9 - July 31

A Midsummer Night's Dream

Artist_ Kang Yusun, Aug 27 - Sep 12

My Style Your Style

Artist_ Mamiko Taira, Aug 27 - Sep 12

Open Theater

Artist_ Hong Youngin, Sep 17 - Oct 20

Park +

Artist_ Park Plus (Park Jinwoo, Asuka Kawabata , Jun Takaki), Nov 5 - Dec 4

2005

NONAMENOSHOP

Artist_ NONAMENOSHOP, Jan 14 - Feb 6

Human – Morpheme

Artist_ Ko Kahyoun, Feb 15 - Mar 13

Surreally, Real!

Artist_ Jung Kyuhyoun, Lee Yujin, Sin Kunwoo, Choi Sunghun+Park Sunmin, June 15 - June 30

Maum

Artist_ Ko Jiyoung, Lee Jina, June 15 - June 30

Tinker

Artist_ Pyo Sumi, Oct 12 - Nov 6

Hangul Walks Out

Artist_ Kwon Jungmin, Kim Heejun, Park Jiha, Lee Dokyoung, Lee Yongje, Nov 15 - Dec 4



EXHIBITION



2006

Lost in Language

Artist_Lee Jooyoung, Feb 25 - Mar 19

People Call Me Madame Owl

Artist_An Kanghyoun, Mar 24 - April 14

sulki + Min, Factory 060421-060513

Artist_Sulki + Min, April 21 - May 13

Visible and Invisible

Artist_Kim Yountae, May 19 - June 11

Connecting

Artist_Hyoun Myoung-A, July 7 - July 25

Map in Space

Artist_Jung Hyounsu, July 7 - July 25

Rolling-art

Artist_Jeremiah Teipen, Sin Kiwoon, July 29 - Aug 20

Realities

Artist_AVPD, July 29 - Aug 20

Super – ebayer

Artist_Lee Mihye, Sep 22 - Oct 15

Separate and Connect

Artist_Nobuyuki dakahasi, Oct 19 - Nov 9

Cheeky Art Show in Seoul

Artist_Sim Habin, Nov 17 - Dec 10

2007

Spooky action at a distance

Artist_Dean Moss, Feb 21 - May 14

handmade work+shop

Artist_Kim Ik, Sin Jihyoun, ttae[Kang Sujung, Park Minji], Chae Sukyoung,

Yoon Jinsun, Kang Yusun, Jin Kyeyoung, May 30 - Apr 22

The Drawing Show

Artist_Ko Kahyoun, Kim Kira, Kim Siyeon, Kim Heesung, NONAMENOSHOP,

Park Hwanhee, Klega, Han Junglim, Apr 27 - Mar 20

Tree

Artist_Lee Myounggho, Mar 25 - July 20

Works made in Valencia

Artist_Sung Jaehyuk, July 20 - July 28

Noh Jun x Seo Seung-Mo - 1st collabo. <Hole>

Artist_Noh Jun, Seo Seungmo, July 31 - Sep 23

Serendipitous Tangents

Artist_Chris Caccamise, Mike Houston & Martin Mazzora, Jennifer & Kevin McCoy,

Liliana Porter, Yuken Teruya, Jennifer Viola, Megan Whitmarsh, Sep 29 - Oct 21

When every lover all over the world calls at the same time

Artist_Jaye Rhee, Oct 27 - Nov 18

Choi Sung-hun+Park Sun-min solo exhibition “4:00 ? 9:00”

Artist_Choi Sunghun+Park Sunmin Nov 29 - Dec 23



EXHIBITION



2008

In My Shoes

Artist_Roh Sangjun, Lee Joonhyeong, Mar 5 - Mar 26

Tempography

Artists_Tempography made by 20 artists worldwide, April 4 - April 27

Things Possible There

Artist_Lee Yoojin, Choi Wonjeong, Heo Jeongeun, May 9 - June 1

input process

Artist_Choi Byeongil, June 27 - July 20

Underneath the Surface: Contemporary Korean Art Now

Artist_Kyeong Hyeonsoo, Kwon Hyuk, Kim Siyeon, NONAMENOSHOP, Roh Sangjun, Lee Myounggho, Jaye Rhee, Choi Sunghun+Park Sunmin, July 30 - Aug 3

Versus

Art Director_Choi Sunghun+Park Sunmin, Aug 20 - Aug 30

Space in Progress

Artist_Kwak Nasil, Sep 5 - Sep 21

oh my office

Artist_Lee Mikyung, Oct 10 - Nov 2

nanuda project

Artist : Kwon Hyuk, Nov 12 - Nov 30

Vague Obedience

Artis _Jung Sanghyun, Dec 5 - Dec 28

2009

Bored, Architecture, Poetry

Artist_Kim Hyeisoo, Yoon Sodam, Feb 12 - Mar 8

Kinross, Modern Typography (1992, 2004, 2009)

Artist_Choi Min, Mar 13 - April 5

La

Artist_L.A.Tomari, April 8 - April 26

Lauan Shelves Poetics in the ordinary

Artist_Nami Makishi, May 2 - May 24

Versus

Art Director_Choi Sunghun+Park Sunmin, May 12 - May 23

breathing in & out

Artist_Kim Mihyeong, Kim Beomsoo, Choi Jinkee, Han Junglim, Hong Youngin, May 29 - June 21

one day, one deal

Artist_Park Jihoon, June 27 - July 19

made of layers

Artist_Choi Sunghun+Park Sunmin, Kim Siyeon, Kwon Doohyeon, Shin Kiwoon, July 17 - Aug 8

Intervals

Artist_Moon Youngmin, July 24 - Aug 15

Untitled

Artist_Choi Sunghun+Park Sunmin, Sep 3 - Sep 20

Actual City

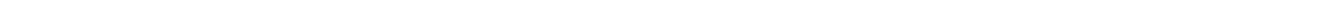
Artis_Seok Jaewon, Marcus Craft, Fau Kajals, Gu Jaeun, Yeremi Jansen, Kambitz Shafei, Janni, Choi Hyemi, Sep 23 - Oct 2

House in Your Head

Artist_Randi & Katrine, Nov 7 - Dec 5

Bonobo Noise Project

Artist_Kim Hojoon, Nov 28 - Dec 5



EXHIBITION



2010

Everybody's Dream

Artist_Kim Joohyun, Dec 17 - Jan 17

Accumulated traces

Artists_Yoon Kalim, Mar 13 - Mar 19

What we found in an abandoned garage

Artist_Chung Soyoung, Sandro Setola, Mar 25 - April 25

versus -Choi Sung-hun+Park Sun-min

Artist_Oh Minjeong(choreographer), 20 besides Kyung Roh Bannwart (tempography),

Chung Soyoung , May 4 - May 15

under the coral-like blue concrete

Artist_Vicky Sungeun Kim, May 25 - June 20

Giant Funfair

Artist_Roh Sangjun, June 30 - July 28

exchange.collage.pastiche

Artist : Park Jinhyun, Yoo Jooyeon, Aug 7 – Sep 3

Alive _birth of a tale

Artist_Masako Suzuki, Risa Sato, Ryoko Aoki, Syoin Kajii, Yoichi Nagano, Sep 7 - Oct 3

The Adventure of Ophelia

Artist_Park Minhee, Lee Kangil, Jiminy, Oct. 14 - Oct 31

Fascination

Artist_Eric Perriard, Nov. 20 – Dec 12

2011

Some dreams don't come and some dreams don't go.

Artist_Kook Dongwan, Jan 15 - Feb 12

X-Field Seoul + Neighboring Effect

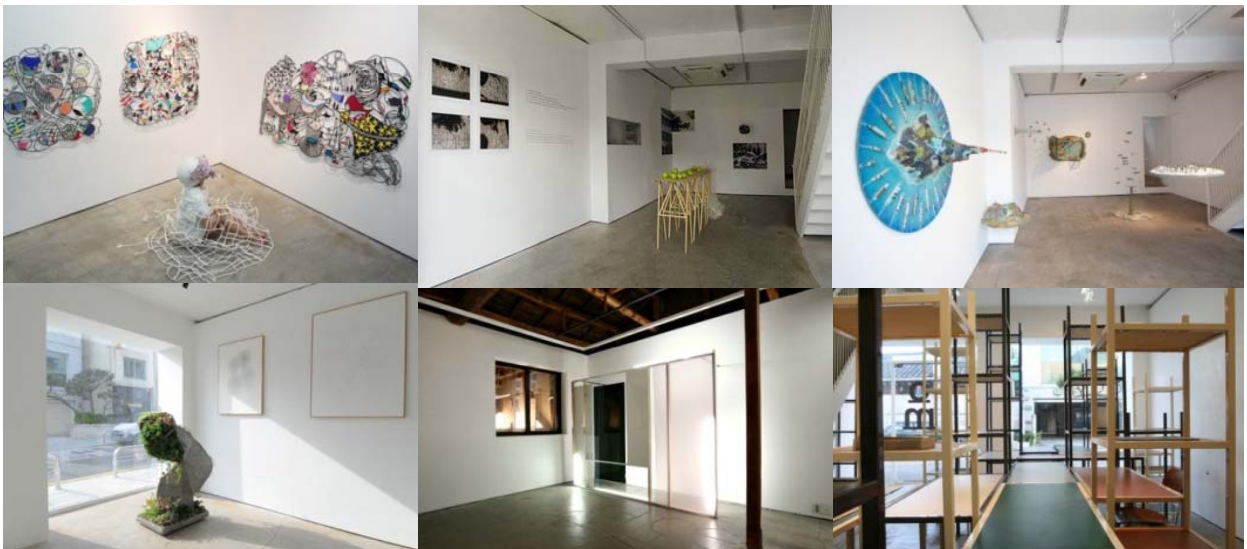
Artists_x-field, October's Sky, Randomwalks, Famersparty, Kim Hyungjin, Feb 25 - Mar 19

Empty Smiles

Artist_Kwon Soonyoung, Mar 25 - April 17

Playing Reality

Artist_Kyung Roh Bannwart, May 14 - June 12

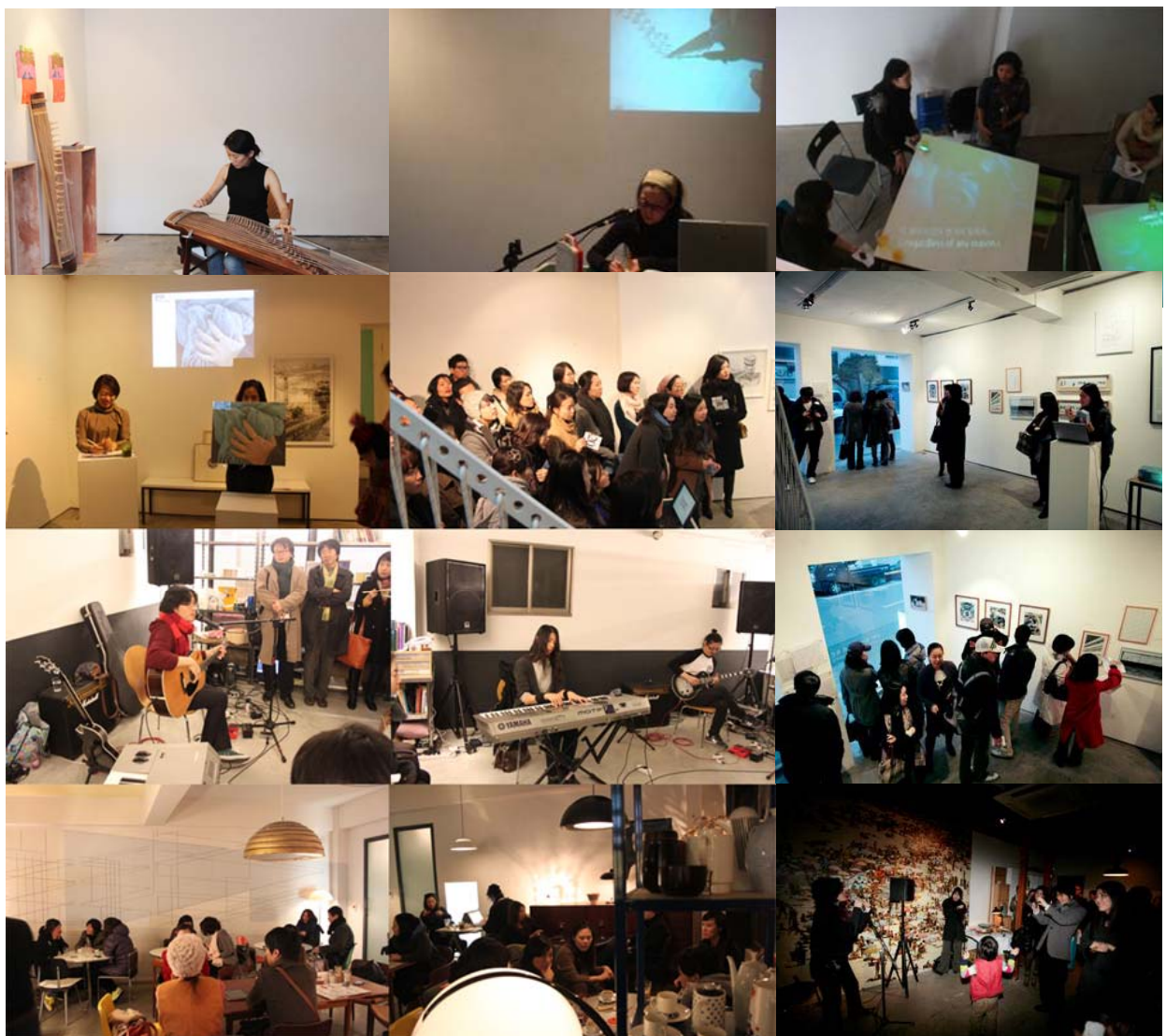


PROJECT



Project

FACTORY plans & executes both commissioned and self-initiative public art projects as well as community-involved art projects with an aim to promote & further a discourse on contemporary art to a broader audience. Factory also provides art lovers in general with a chance to get to learn and collect contemporary artworks in an enjoyable way with FACTORY's annual auction/end-of-year-party.



ART CONSULTING



Art Consulting

As an art consulting company, FACTORY plans and executes diverse art & design related outsourced /commissioned projects.

The primary tasks are as follows

Exhibition and Event Planning
Research Projects
International Communication

2011

Traditional Market Revitalization Project - a constant stream of callers project (Choonchyun Market) : Visual program project managing

10 Colors 10 Designers of Seoul
: Exhibition planning and communication

2010

5th Public Design Exhibition & Conference
: International communication

Dongdaemun Design Plaza
: Exhibition contents master plan

Meet in Arko
: Exhibition panning and public space design direction

April Hotel Exhibition
: Site-specific installation project planning & execution

2009

Traditional Market Revitalization Project - a constant stream of callers project (Jumunjin Market) : Visual program project managing

Seoul Design Olympic_ World Design Market (Olympic Main Stadium)
: Curation of special exhibition and international communications

2008

Heyri Pan Festival (Heyri Art Valley)
: Visual art program art directing

Seoul Design Olympic_ World Design Market (Olympic Main Stadium)
: Curation of special exhibition and international communications

Seoul Design Week 2007 International Academic Conference (National Assembly Building)
: International communication and event programming

National Folk Museum's permanent exhibition space 2 'Everyday Life of Korean'
: Space design and exhibition planning

ART CONSULTING



Art Consulting

As an art consulting company, FACTORY plans and executes diverse art & design related outsourced /commissioned projects.

The primary tasks are as follows

- Exhibition and Event Planning
- Research Projects
- International Communication

2006
-
2007

2007 International Federation of Interiors (BEXCO)

: International Event Master Plan and International Communication

2006

Special Exhibition of Seoul Olympic Museum

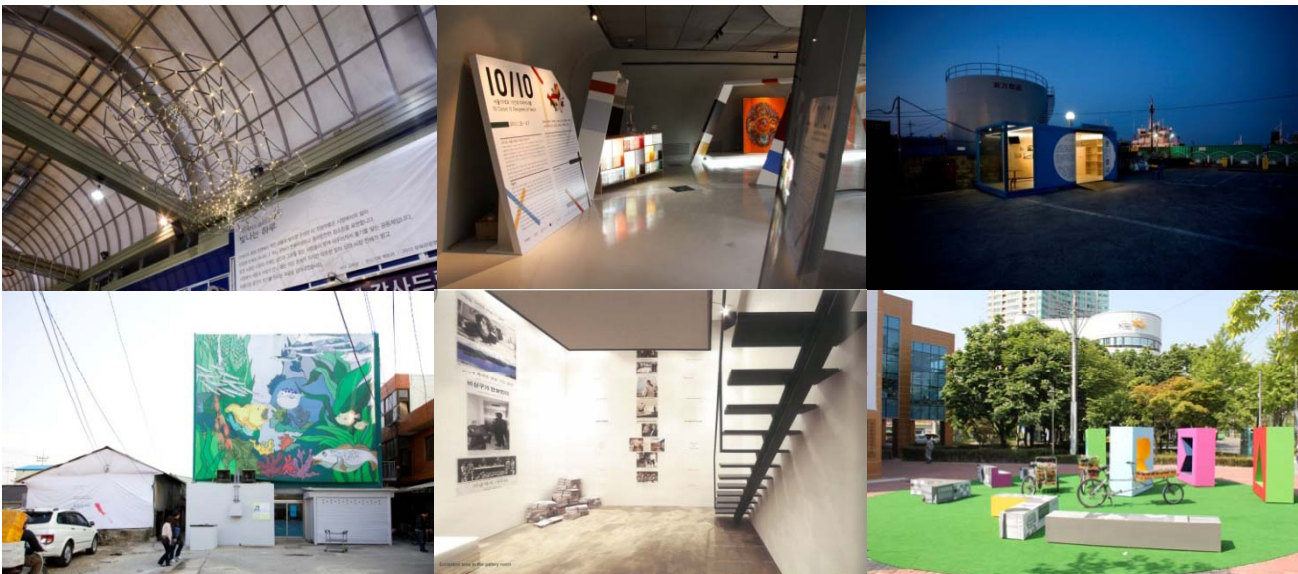
: exhibition planning, space design

Design Korea 2005 (COEX)

: International communication, event planning

Bangsan Porcelain Museum (Gangwon-do Yang-gu)

: Exhibition direction and master plan of educational programs



EVENT & WORKSHOP



Event & Workshop

Together with the exhibition itself, Gallery FACTORY plans artist talks to further enhance the knowledge and understanding of the exhibition, and has been executing open workshops and programs independent from shows. A variety of workshop programs for continuous inspiration and annual end-of-the-year party-auctions decorate and celebrate each year.

2004

1. Typographer Yongjae Lee's Bookbinding Workshop
2. Studio Jupiter's Marionette Workshop
3. Artbook Workshop
4. Myunga Hyun's Artbook Workshop
5. FACTORY Auction

2005

1. Bookbinding with Yongjae Lee's Bookart-kit Workshop
2. Siyeon Kim's Story Box Workshop
3. nonamenoshop's Constellations Workshop
4. Nashil Kwak's Artbook Workshop
5. FACTORY Auction

2006

1. Yousun Kang's Wool-felt Workshop
2. nonamenoshop Garden Workshop
3. Myunga Hyun's Bookbinding Workshop
4. Sunyoung Lim's Artbook Workshop
5. FACTORY Auction

2007

1. Handmade Work + Shop
2. FACTORY Auction

2008

1. Healing Workshop Series – Herbs Workshop
2. FACTORY & Gagarin Auction

2009

1. Video and Performance Project – Bonobo Noise Project
2. FACTORY & Gagarin Auction

2010

1. Nashil Kwak's Artbook Workshop II
2. FACTORY & Gagarin Auction

2011

1. Healing Workshop Series – Healing Herbs (Aromatherapy with herbs)
2. Gastronomy Workshop – Healing Recipe (Healing Recipes with Superfoods)



PUBLICATION



Publication (catalogues and magazines)

- Independent Magazine Publication & Exhibition : "Versus" (since 2007) _ so far 3 issues have been published
- Exhibition catalogue, Artist books

Independent magazine - Versus

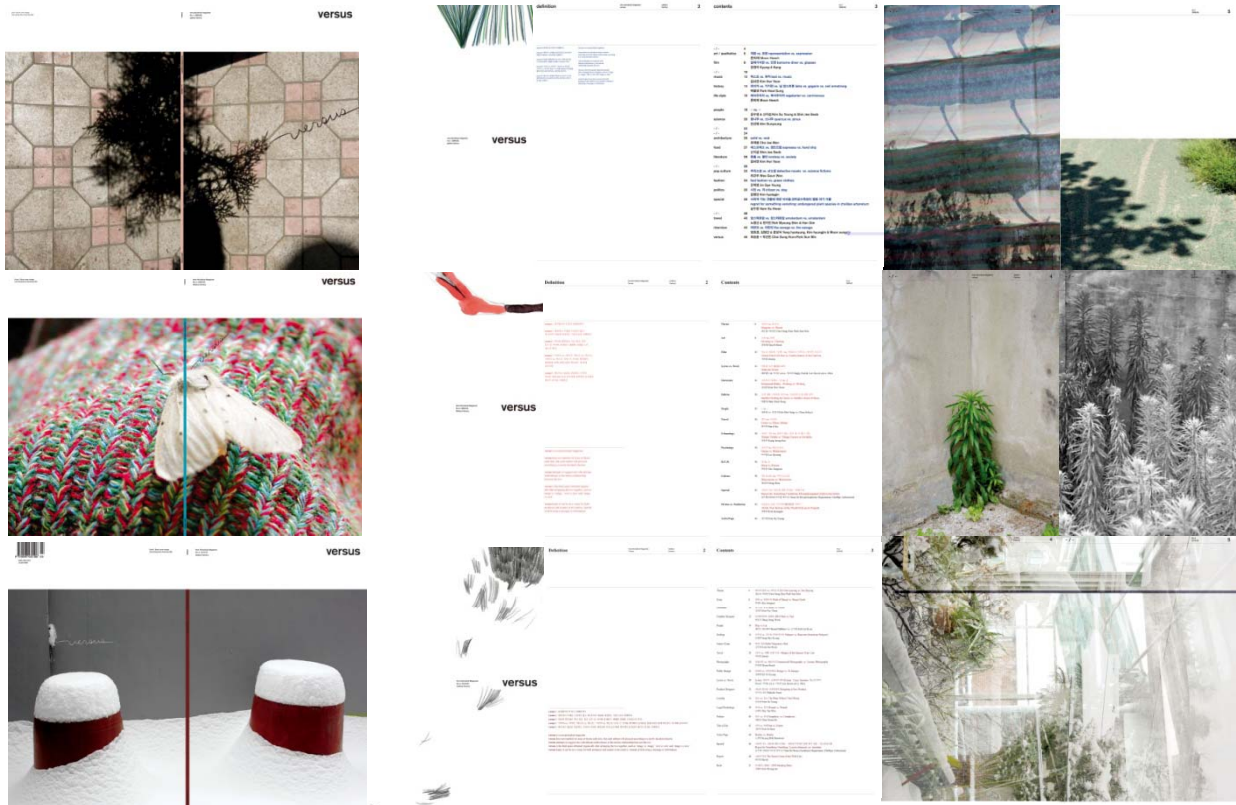
Versus is a non-periodical magazine.

Versus does not decide its issue or theme each time, but each edition will proceed according to a newly decided criterion.

Versus attempts to reveal one with delicate ambivalence or the intense relationship between the two.

Versus is the third space obtained naturally after arranging the two together, such as 'image vs. image', 'text vs. text' and 'image vs. text'.

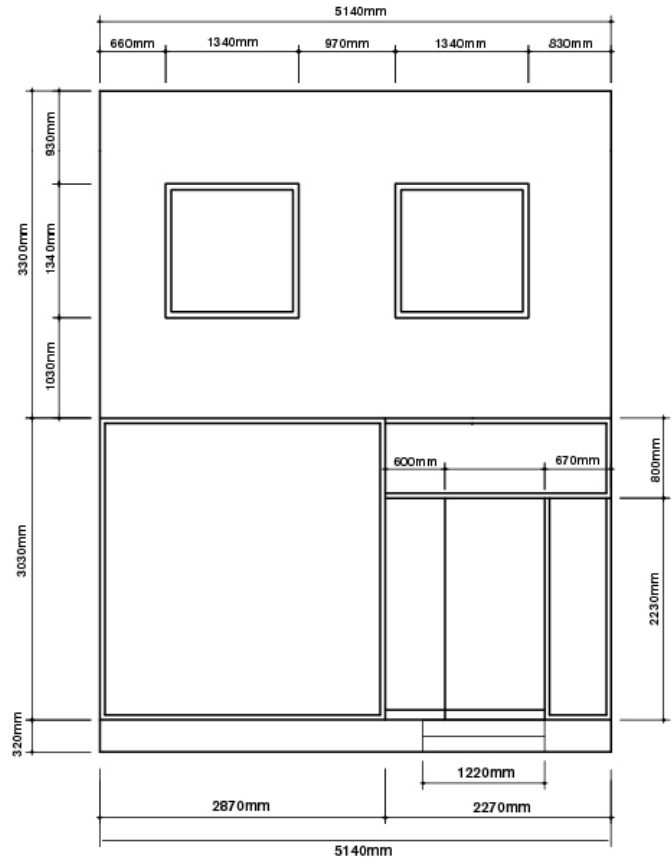
Versus hopes it can be an avenue for both producers and readers to be creative, instead of delivering a message or information.



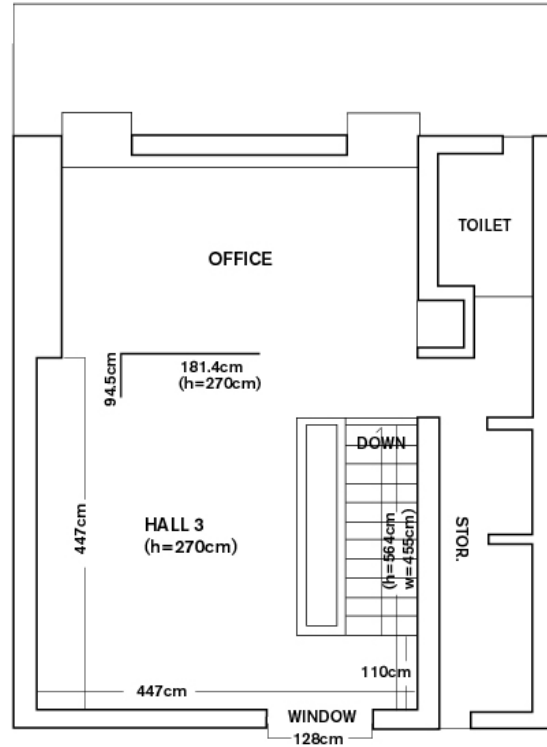
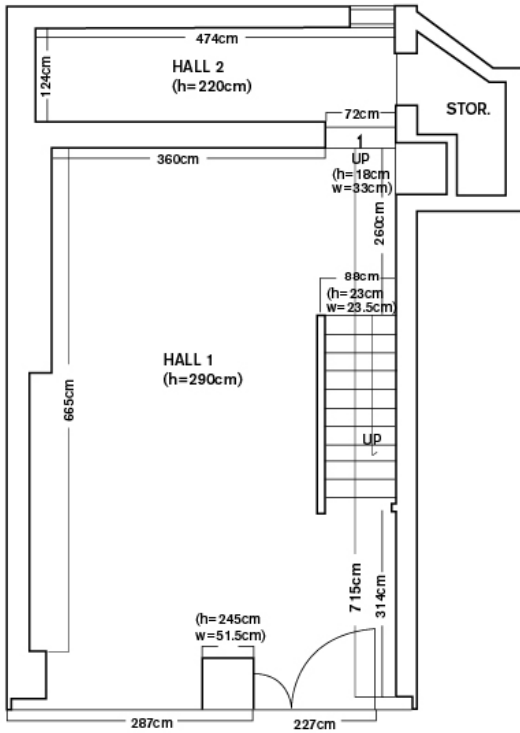
FLOOR PLAN



Exterior



Interior



CONTACT



Address

127-3 Changsung-dong, Jongno-gu, Seoul, Korea

Tel/Fax

+82 2 733 4883

Email

galleryfactory@gmail.com

Web

www.factory483.org

Director Bora Hong
Coordinator Hyejung Noh

